

TECHNICAL MANUAL

ORGANIZATIONAL, DIRECT SUPPORT, AND GENERAL SUPPORT  
MAINTENANCE REPAIR PARTS AND SPECIAL TOOL LISTS  
(INCLUDING DEPOT MAINTENANCE REPAIR PARTS AND SPECIAL TOOLS)  
FOR

**MESSAGE CENTERS**

**AN/GSQ-80 (NSN 9999-00-066-4524),  
AN/GSQ-80A (NSN 9999-00-245-1840),  
AND  
AN/GSQ-80B (NSN 9999-00-245-1840)**



TECHNICAL MANUAL }  
 No. 11-5895-365-24P }

HEADQUARTERS  
 DEPARTMENT OF THE ARMY  
 WASHINGTON, DC, 23 November 1976

**ORGANIZATIONAL, DIRECT SUPPORT, AND GENERAL SUPPORT  
 MAINTENANCE REPAIR PARTS AND SPECIAL TOOLS LIST  
 (INCLUDING DEPOT MAINTENANCE REPAIR PARTS AND SPECIAL TOOLS)  
 FOR  
 MESSAGE CENTERS  
 AN/GSQ-80 (NSN 9999-00-066-4524),  
 AN/GSQ-80A (NSN 9999-00-245-1840),  
 AND  
 AN/GSQ-80B (NSN 9999-00-245-1840)**

*Current as of 9 August 1976*

**REPORTING OF ERRORS**

You can improve this manual by recommending improvements using DA Form 2028-2 (Test) located in the back of the manual. Simply tear out the self addressed form, fill it out as shown on the sample, fold it where shown, and drop it in the mail.

If there are no blank DA Form 2028-2 (Test) in the back of your manual, use the standard DA Form 2028 (Recommended Changes to Publications and Blank Forms) and forward to the Commander, US Army Electronics Command, ATTN: DRSEL-MA-Q, Fort Monmouth, New Jersey 07703.

In either case a reply will be furnished direct to you.

**Table of Contents**

|         |  | Page | Illus<br>Figure |
|---------|--|------|-----------------|
| SECTION | I. Introduction -----  | 1    |                 |
|         | II. Repair parts list _____  | 5    |                 |
| Group   | 00 Message Centers AN/GSQ-80, AN/GSQ-80A, and AN/GSQ-80B _____                     | 5    | 1               |
|         | 01 Intercommunication Station LS-147C/FI (See TM 11-5830-221-24P for parts.)       |      |                 |
|         | 02 Telephone Set TA-312/PT (See TM 11-5605-201-12 and TM 11-5605-20145 for parts.) |      |                 |
|         | 03 Shelters S-280A/G, S-280B/G, and S-141/G _____                                  | 11   | 2               |
|         | 0301 Power distribution panel _____  | 15   | 3               |
|         | 0302 Cable, Power Electrical CX-7705/U _____                                       | 17   | 4               |
|         | 0303 Cable, Power Electrical CX-7453/U _____                                       | 19   | 5               |
|         | 0304 Cable assembly, telephone 4 foot lone o/a _____                               | 21   | 6               |
| SECTION | III. Special tools list (Not applicable)   |      |                 |
|         | IV. National stock number and part number index _____                              | 22   |                 |

•This manual supersedes so much of TM 11-5895-365-15, 8 April 1966, including Change 2, 21 January 1970, as pertains to repair parts and special tools list.



# SECTION I

## INTRODUCTION

### 1. Scope

This manual lists repair parts and special tools required for performance of organizational, direct support, and general support maintenance of the AN/GSQ-80, AN/GSQ-80A, and AN/GSQ-80B.

### 2. General

This Repair Parts and Special Tools List is divided into the following sections:

*a. Section II. Repair Parts List.* A list of repair parts authorized for use in the performance of maintenance. The list also includes parts which must be removed for replacement of the authorized parts. Parts lists are composed of functional groups in ascending numerical sequence, with the parts in each group listed in figure and item number sequence.

*b. Section III. Special Tools List.* Not applicable.

*c. Section IV. National Stock Number and Part Number Index.* A list, in ascending National item identification number (NIIN, last 9 digits) sequence, of all National stock numbers appearing in the listings, followed by a list, in alphameric sequence, of all part numbers appearing in the listings. National stock number and part numbers are cross-referenced to each illustration figure and item number appearance.

### 3. Explanation of Columns

The following provides an explanation of columns found in the tabular listings:

*a. Illustration.* This column is divided as follows:

(1) *Figure number.* Indicates the figure number of the illustration in which the item is shown.

(2) *Item number.* The number used to identify each item called out in the illustration.

*b. Source, Maintenance, and Recoverability Codes (SMR).*

(1) *Source code.* Source codes are assigned to support items to indicate the manner of acquiring support items for maintenance, repair, or overhaul of end items. Source codes are entered in the first and second positions of the Uniform SMR Code format as follows:

| <i>Code</i> | <i>Definition</i>   |
|-------------|---|
| PA          | Item procured and stocked for anticipated or known usage.                               |
| PD          | Support item, excluding support equipment, procured for initial issue or outfitting and |

| <i>Code</i> | <i>Definition</i>  |
|-------------|--|
|             | stocked only for subsequent or additional initial issues or outfittings. Not subject to automatic replenishment. |
| XD          | A support item that is not stocked. When required, item will be procured through normal supply channels.         |

#### NOTE

Cannibalization or salvage maybe used as a source of supply for any items source coded above except those coded XA, XD, and aircraft support items as restricted by AR 700-42.

(2) *Maintenance code.* Maintenance codes are assigned to indicate the levels of maintenance authorized to USE and REPAIR support items. The maintenance codes are entered in the third and fourth positions of the Uniform SMR Code format as follows:

(a) The maintenance code entered in the third position will indicate the lowest maintenance level authorized to remove, replace, and use the support item. The maintenance code entered in the third position will indicate one of the following levels of maintenance:

| <i>Code</i> | <i>Application/Explanation</i>  |
|-------------|---|
| O           | Support item is removed, replaced, used at the organizational level.  |
| F           | Support item is removed, replaced, used at the direct support level.  |
| H           | Support item is removed, replaced, used at the general support level. |

(b) The maintenance code entered in the fourth position indicates whether the item is to be repaired and identifies the lowest maintenance level with the capability to perform complete repair (i. e., all authorized maintenance functions). This position will contain one of the following maintenance codes:

| <i>Code</i> | <i>Application/Explanation</i>   |
|-------------|--|
| O           | The lowest maintenance level capable of complete repair of the support item is the organizational level. |
| F           | The lowest maintenance level capable of complete repair of the support item is the direct support level. |
| H           | The lowest maintenance level capable of complete   |

*Code*                      *Application/Explanation*  
 repair of the support item is the general support level.

Z—Nonreparable. No repair is authorized.

(3) *Recoverability code*. Recoverability codes are assigned to support items to indicate the disposition action on unserviceable items. The recoverability code is entered in the fifth position of the Uniform SMR Code format as follows:

| <i>Recoverability codes</i> | <i>Definition</i>  |
|-----------------------------|--|
| Z                           | —Nonreparable item. When unserviceable, condemn and dispose at the level indicated in position 3.  |
| F                           | —Reparable item. When uneconomically reparable, condemn and dispose at the direct support level.   |
| H                           | —Reparable item. When uneconomically reparable, condemn and dispose at the general support level.  |
| D                           | —Reparable item. When beyond lower level repair capability, return to depot. Condemnation and disposal not authorized below depot level. |

c. *National Stock Number*. Indicates the National stock number assigned to the item and will be used for requisitioning purposes.

d. *Part Number*. Indicates the primary number used by the manufacturer (individual, company, firm, corporation, or Government activity), which controls the design and characteristics of the item by means of its engineering drawings, specifications standards, and inspection requirements, to identify an item or range of items.

**NOTE**

When a stock numbered item is requisitioned, the repair part received may have a different part number than the part being replaced.

e. *Federal Supply Code for Manufacturer (FSCM)*. The FSCM is a 5-digit numeric code listed in SB 70842 which is used to identify the manufacturer, distributor, or Government agency, etc.

f. *Description*. Indicates the Federal item name and, if required, a minimum description to identify the item.

g. *Unit of Measure (U/M)*. Indicates the standard of the basic quantity of the listed item as used in performing the actual maintenance function. This measure is expressed by a two-character alphabetical abbreviation (e. g., ea, in, pr, etc.). When the unit of measure differs from the unit of issue, the lowest unit of issue that will satisfy the required units of measure will be requisitioned.

h. *Quantity Incorporated in Unit*. Indicates the quantity of the item used in the breakout shown on the

illustration figure, which is prepared for a functional group, subfunctional group, or an assembly.

**4. Special Information**

a. Usable on codes are shown in the description column. Uncoded items are applicable to all models. Identification of the usable on codes used in this publication are:

| <i>Code</i> | <i>Used on</i> |
|-------------|----------------|
| 2QE         | AN/GSQ-80      |
| 2W5         | AN/GSQ-80A     |
| 2Y7         | AN/GSQ-80B     |

b. The following publications pertain to the AN/GSQ-80, AN/GSQ-80A and AN/GSQ-80B and its components:

- TM 11-2300-369-15-1, Installation of Telephone Sets TA-312/PT and TA-1/PT with reel equipment CE-11 in gun, AAA-20MM, XM167.
- TM 11-5410-206-14P, Shelter, Electrical Equipment S-141/G and S-141B/G.
- TM 11-5410-213-14P, Shelter, Electrical Equipment S-280A/G (NSN 5410-00-999-6022) and S-280B/G (NSN 5410-00-117-2868).
- TM 11-5805-201-12, Telephone Set TA-312/PT (TO 31W1-2PT-291).
- TM 11-5805-201-35, Telephone Set TA-312/PT (TO 31W1-2PT-292).
- TM 11-5830-221-12, Intercommunication Stations LS-147A/FI, LS-147B/FI, LS-147C/FI and LS-147D/FI.
- TM 11-5830-221-24P, Intercommunication Station LS-147C/FI, FSN 5830-752-5357.
- TM 11-5830-221-35, Intercommunication Stations LS-147A/FI, LS-147B/FI, LS-147C/FI and LS-147D/FI.
- TM 11-5895-365-15, Message Centers AN/GSQ-80, AN/GSQ-80A and AN/GSQ-80B.

**5. How to Locate Repair Parts**

a. When National stock number or part number is unknown.

(1) *First*. Using the table of contents, determine the functional group within which the repair part belongs. This is necessary since illustrations are prepared for functional groups and listings are divided into the same groups.

(2) *Second*. Find the illustration covering the functional group to which the repair part belongs.

(3) *Third*. Identify the repair part on the illustration and note the illustration figure and item number of the repair part.

(4) *Fourth*. Using the Repair Parts Listing, find the figure and item number noted on the illustration.

b. When National stock number or part number is known.

(1) *First*. Using the Index of National Stock

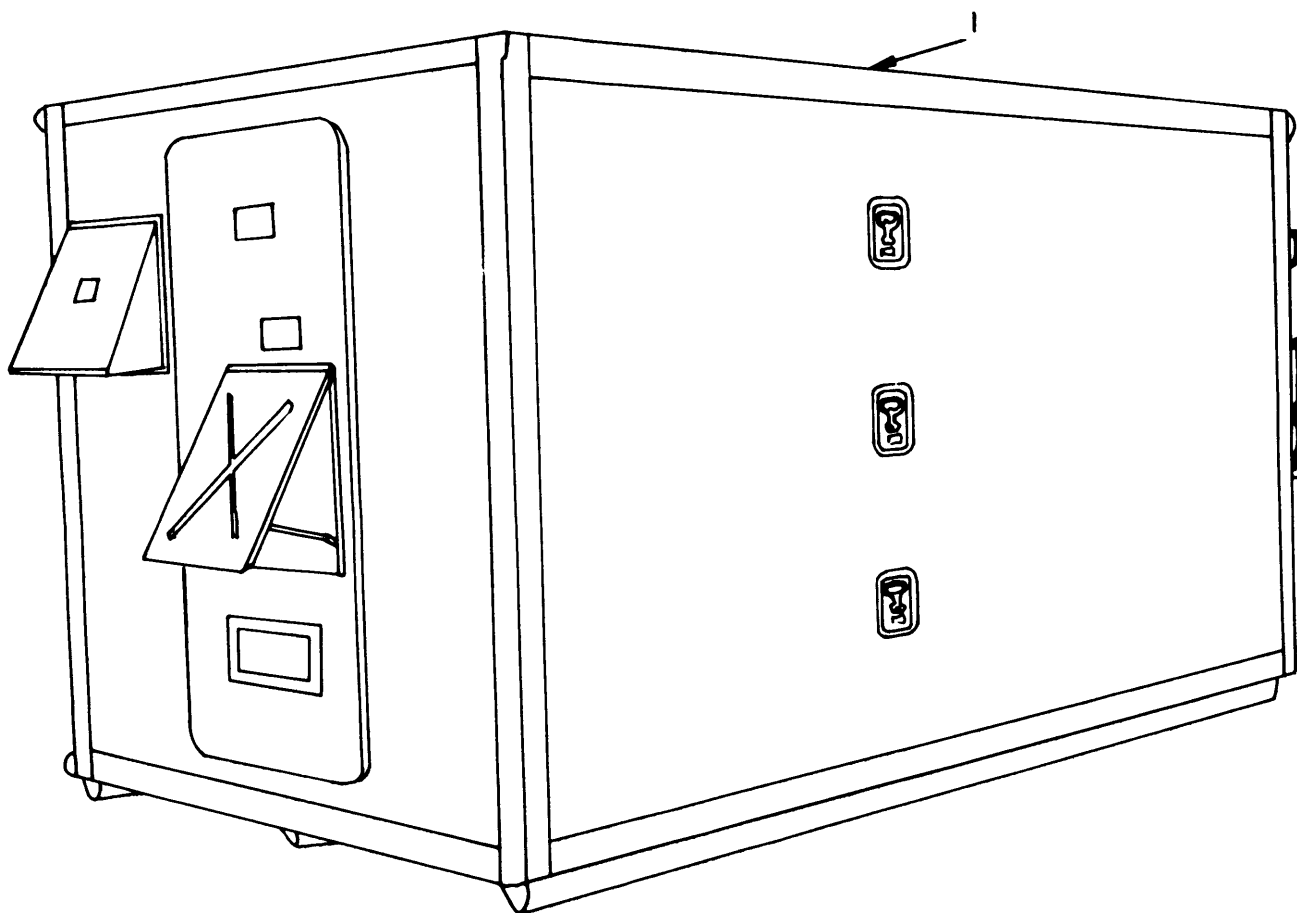
Numbers and Part Numbers, find the pertinent National stock number or part number. This index is in ascending NIIN sequence followed by a list of part numbers in ascending alphanumeric sequence, cross-referenced to the illustration figure number and item number.

(2) *Second.* After finding the figure and item number, locate the figure and item number in the repair parts list.

**6. Abbreviations**

Not applicable.

**(Next printed page is 4)**

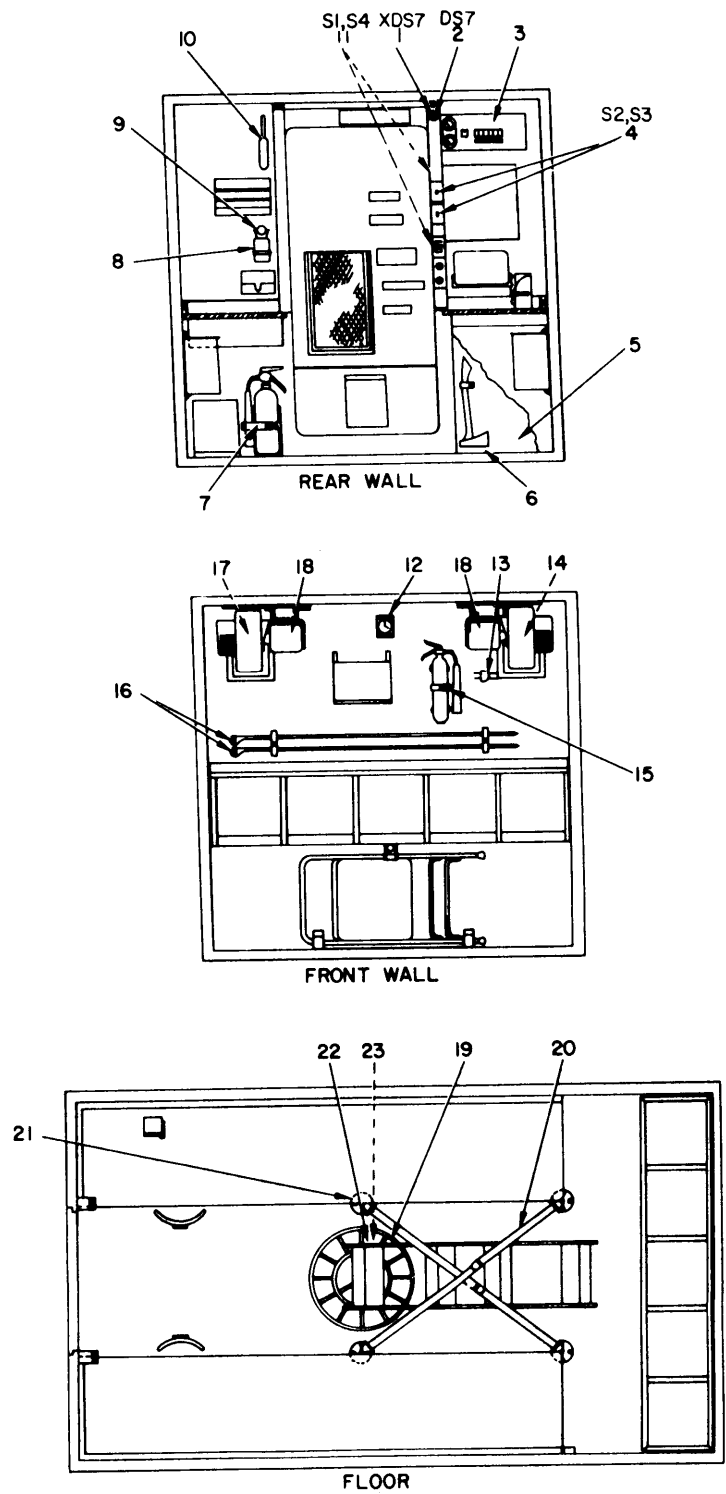


ELONGOOI

Figure 1. Message Centers, AN/GSQ-80, AN/GSQ-80A, AN/GSQ-80B.



| SECTION II                                       |      |          | TM11-5895-365-24P |             |       |  |     | (7)  | (8) |
|--|------|----------|-------------------|-------------|-------|--|-----|------|-----|
| (1)  | (2)  | (3)      | (4)               | (5)         | (6)   |  |     |      |     |
| ILLUSTRATION                                     |      |          |                   |             |       |  |     |      |     |
| (a)  | (b)  | NATIONAL |                   | DESCRIPTION |       |  |     | QTY  |     |
| FIG  | ITEM | SMR      | STOCK             | PART        |       |  |     | INC  |     |
| NO.  | NO.  | CODE     | NUMBER            | NUMBER      | FSCM  | USABLE ON CODE                         | U\M | IN   |     |
|  |      |          |                   |             |       |  |     | UNIT |     |
| GROUP 00 MESSAGE CENTERS, AN/GSQ-80A, AN/GSQ-80B |      |          |                   |             |       |  |     |      |     |
| 1  | 1    | PDOHD    | 9999-00-066-4524  | S-141/G     | 80058 | SHELTER,MODIFIED FOR AN/GSQ-80 OR 2QE  | EA  | 1    |     |
| 1  | 1    | PDOHD    | 5410-00-999-6022  | S-280A/G    | 80058 | SHELTER,MODIFIED FOR AN/GSQ-80A OR 2W5 | EA  | 1    |     |
| 1  | 1    | PDOHD    | 5410-00-117-2868  | S-280B/G    | 80058 | SHELTER,MODIFIED FOR AN/GSQ-80B 2Y7    | EA  | 1    |     |



ELONG002

Figure 2. Shelters S-141/G, S-280A/G and S-280B/G (Sheet 1 of 5).

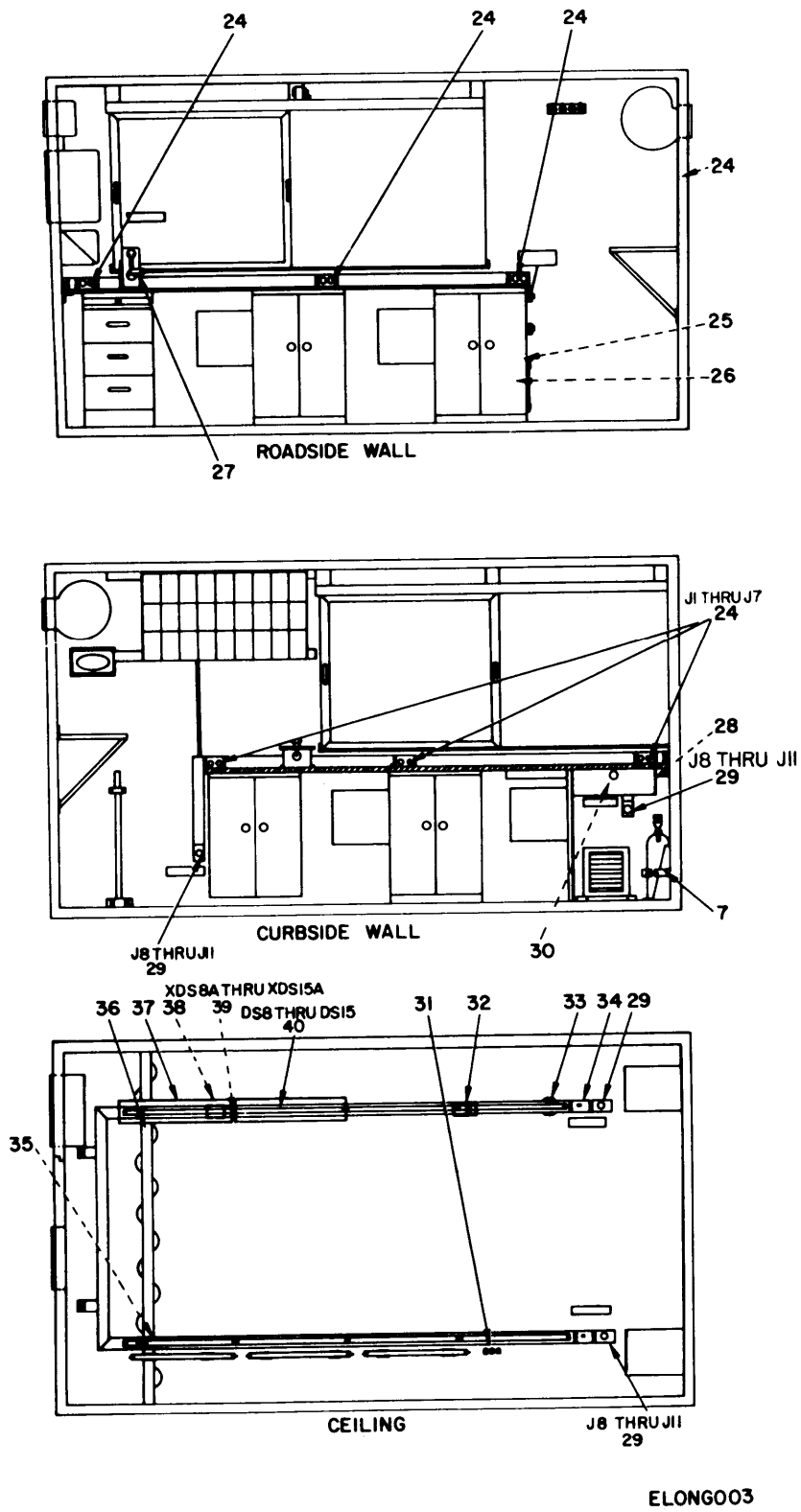
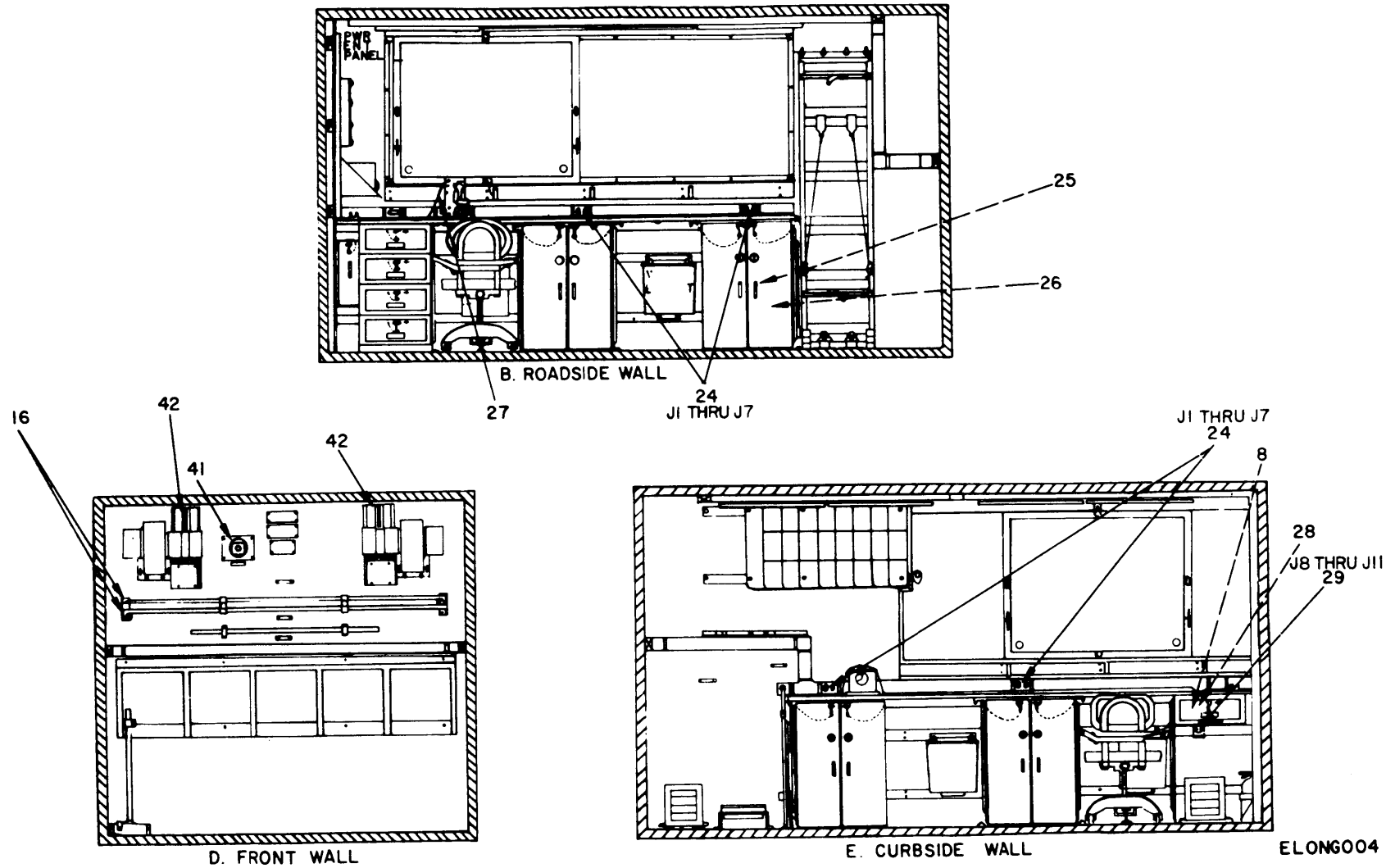


Figure 2. Shelters S-141/G, S-280A/G and S-280B/G (Sheet 2 of 5).



ELONG004

Figure 2. Shelters S-141/G, S-280A/G and S-280B/G (Sheet 3 of 5).

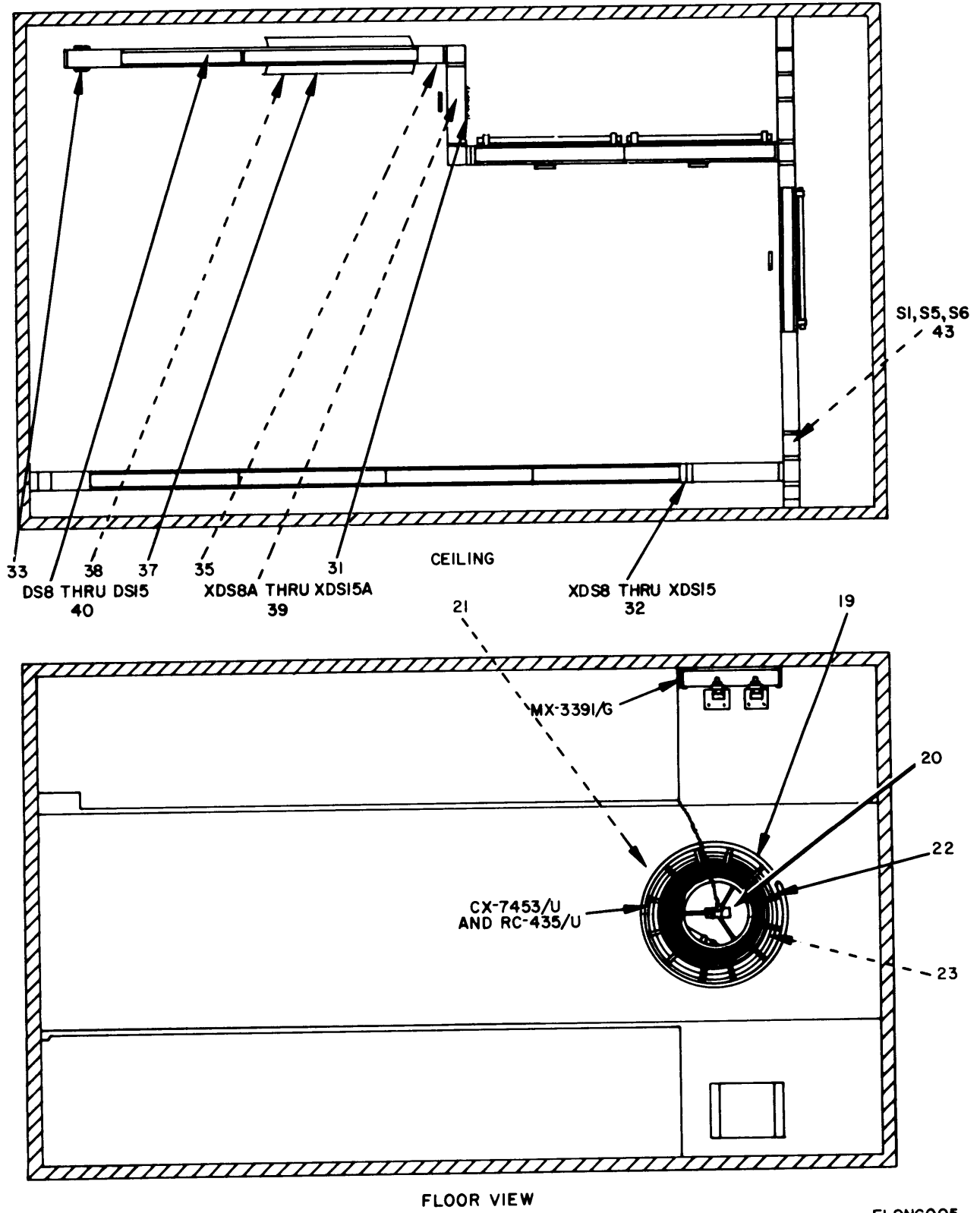
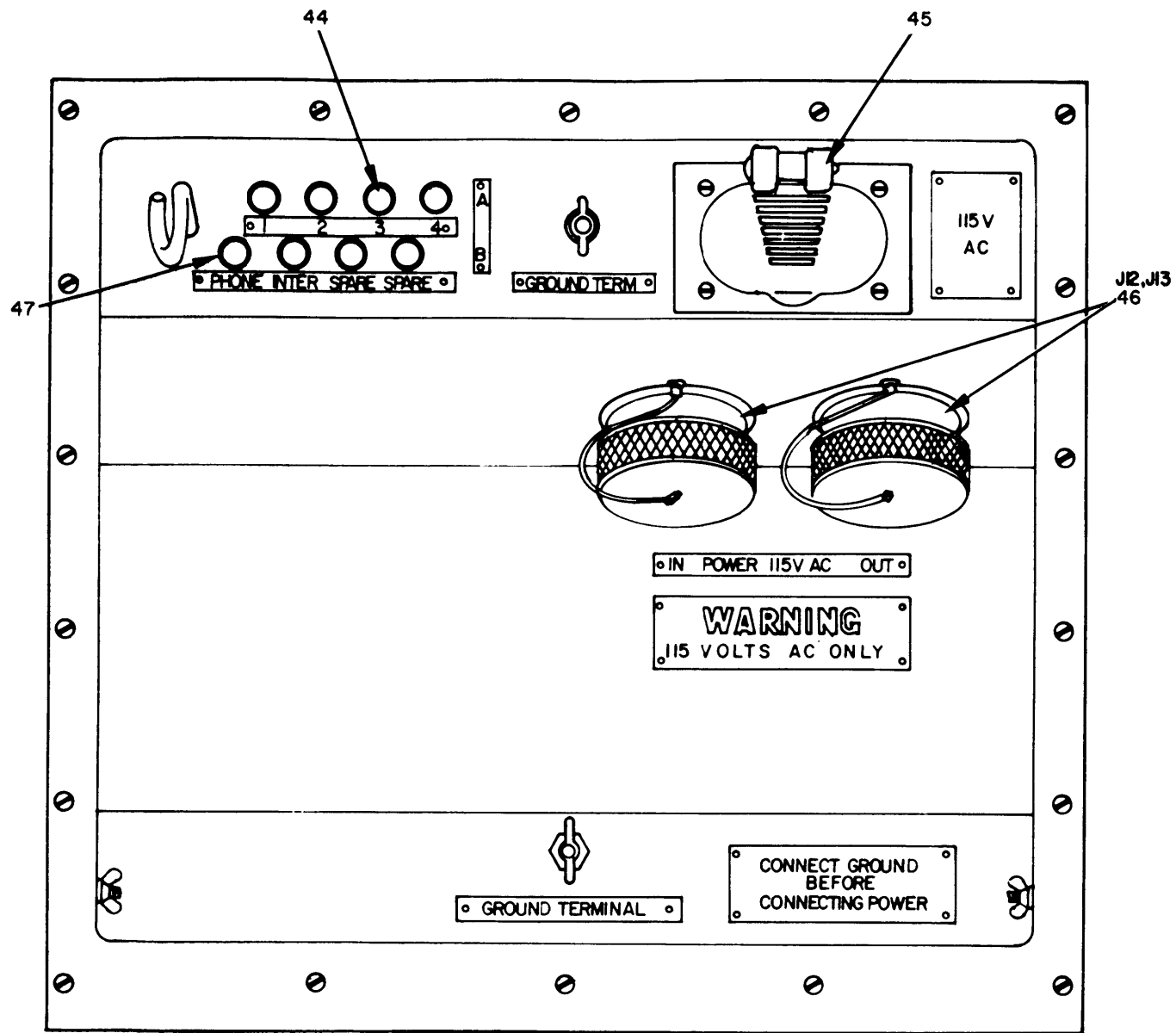


Figure 2. Shelters S-141/G, S-280A/G and S-280B/G (Sheet 4 of 5).

ELONG005



ELONG006

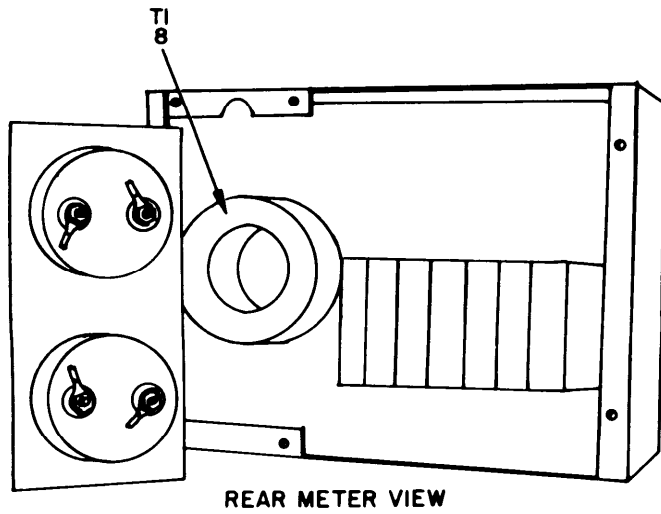
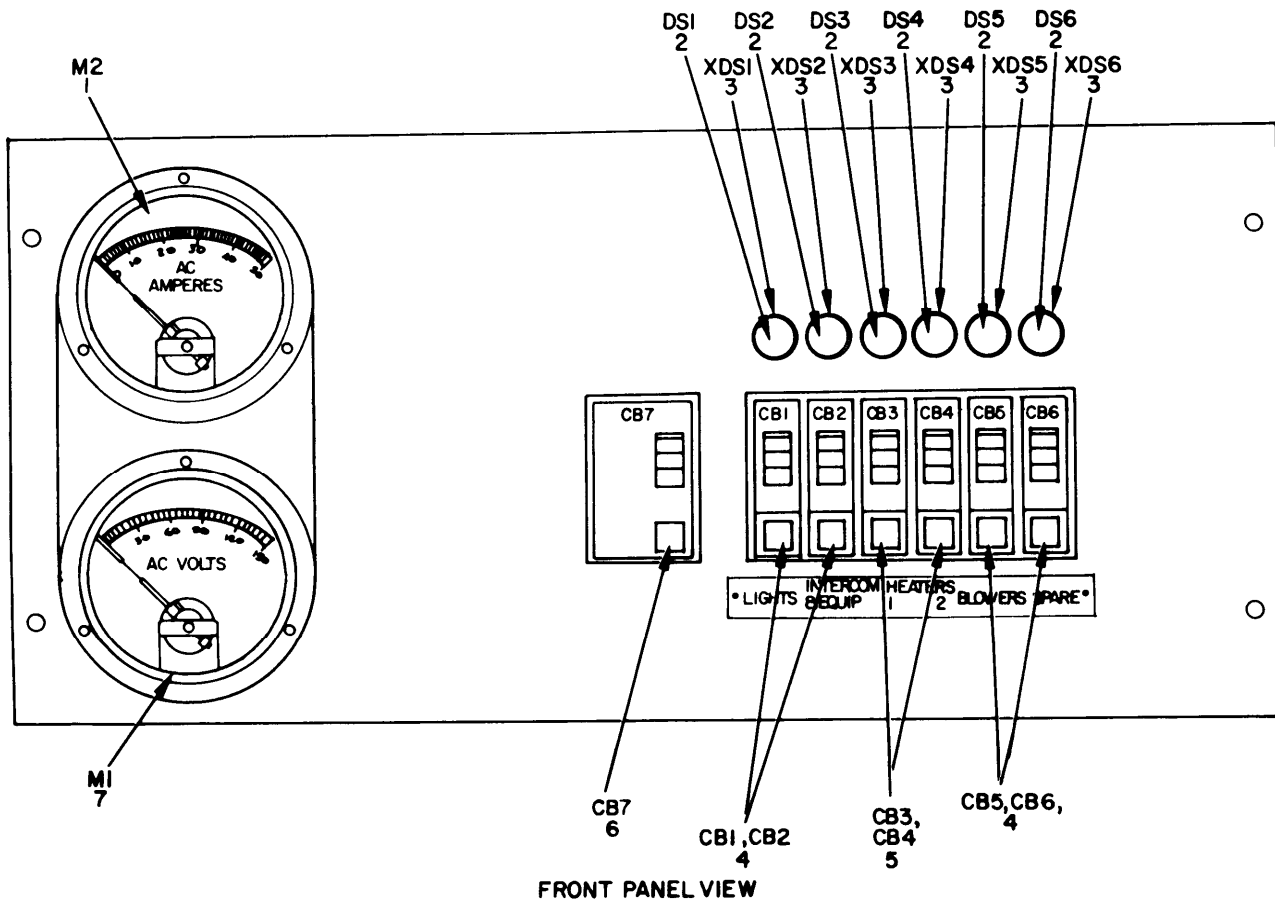
Figure 2. Shelters S-141/G, S-280A/G and S-280B/G (Sheet 5 of 5).

| SECTION II                           |      |          |                  | TM11-5895-365-24P |       |  |     |   |  |
|--------------------------------------|------|----------|------------------|-------------------|-------|--|-----|---|--|
| (1)                                  | (2)  | (3)      | (4)              | (5)               | (6)   | (7)  | (8) |   |  |
| ILLUSTRATION                         |      | NATIONAL |                  | DESCRIPTION       |       | QTY  |     |   |  |
| FIG                                  | ITEM | SMR      | STOCK            | PART              |       | U\M  | INC |   |  |
| NO.                                  | NO.  | CODE     | NUMBER           | NUMBER            | FSCM  | USABLE ON CODE                                   | IN  |   |  |
| GROUP 03 SHELTERS S-141/G, S-280A/G, |      |          |                  |                   |       |  |     |   |  |
| S-280B/G                             |      |          |                  |                   |       |  |     |   |  |
| 2                                    | 1    | PAOZZ    | 6250-00-299-6562 | 4109              | 74545 | LAMPHOLDER                                       | EA  | 1 |  |
| 2                                    | 2    | PAOZZ    | 6240-09-635-9753 | M15098-3-002      | 81349 | LAMP,GLOW NE-34                                  | EA  | 1 |  |
| 2                                    | 3    | XDOFF    |                  | SCD628052         | 80063 | POWER DISTRIBUTION PANEL                         | EA  | 1 |  |
| 2                                    | 4    | PAOZZ    | 5930-00-865-6101 | 5521-1            | 24455 | SWITCH,TOGGLE 2QE                                | EA  | 3 |  |
| 2                                    | 4    | PAOZZ    | 5930-00-865-6101 | 5521-1            | 24455 | SWITCH,TOGGLE 2W5,2Y7                            | EA  | 2 |  |
| 2                                    | 5    | PAOFF    | 4940-00-752-2525 | SMB352166         | 80063 | LEAD,ELECTRICAL                                  | EA  | 1 |  |
| 2                                    | 6    | PAOZZ    | 5110-00-293-2339 | SCC539541         | 80063 | AXE  | EA  | 1 |  |
| 2                                    | 7    | PAOZZ    | 4210-00-595-4085 | SCC539468         | 80063 | BRACKET  | EA  | 1 |  |
| 2                                    | 8    | PAOZZ    | 6230-00-729-9614 | SCC539491         | 80063 | LANTERN,ELECTRIC                                 | EA  | 1 |  |
| 2                                    | 9    | PAOZZ    | 6240-00-155-7786 | PR2               | 08108 | LAMP,INCANDESCENT                                | EA  | 1 |  |
| 2                                    | 10   | PAOZZ    | 7920-00-342-4521 | SCC539469         | 80063 | BRUSH,DUSTING                                    | EA  | 1 |  |
| 2                                    | 11   | PAOZZ    | 5930-00-959-3441 | BZ2RQ181P4        | 91929 | SWITCH,SENSITIVE 2QE                             | EA  | 1 |  |
| 2                                    | 11   | PAOZZ    | 5930-00-683-2703 | BZ2RQ18A2         | 91929 | SWITCH,SENSITIVE 2W5,2Y7                         | EA  | 1 |  |
| 2                                    | 12   | PAOHH    | 6645-00-950-8599 | AT-11             | 81349 | CLOCK,AIRCRAFT,MECHANICAL 2QE                    | EA  | 1 |  |
| 2                                    | 13   | PAOZZ    | 5935-00-149-3985 | 9754              | 74545 | CONNECTOR,PLUG,ELECTRICAL 2QE                    | EA  | 2 |  |
| 2                                    | 14   | PAOZZ    | 4140-00-926-4190 | SMC542696-2       | 80063 | IMPELLER,FAN 2QE                                 | EA  | 1 |  |
| 2                                    | 15   | PAOZZ    | 4210-00-383-7127 | PRB-2-1/2         | 33525 | BRACKET 2QE                                      | EA  | 1 |  |
| 2                                    | 16   | PAOZZ    | 5975-00-224-5260 | MX-148/G          | 80058 | ROD,GROUND                                       | EA  | 2 |  |
| 2                                    | 17   | PAOZZ    | 4140-00-926-4189 | SMC542696-1       | 80063 | IMPELLER,FAN 2QE                                 | EA  | 1 |  |
| 2                                    | 18   | PAOZZ    | 6105-00-999-4814 | KH37KG712X        | 24455 | MOTOR,ELECTRICAL 2QE                             | EA  | 2 |  |
| 2                                    | 19   | PAOZZ    | 8130-00-656-1090 | RC-435/U          | 80058 | REEL,CABLE                                       | EA  | 1 |  |
| 2                                    | 20   | PAOZZ    | 5410-00-792-6336 | 705               | 81902 | STRAP ASSEMBLY,TIE DOWN                          | EA  | 2 |  |
| 2                                    | 21   | PAOZZ    | 5410-00-792-7335 | SMB542412         | 80063 | TIE DOWN PLATE ASSEMBLY                          | EA  | 4 |  |
| 2                                    | 22   | XDOOF    |                  | CX-7453/U         | 80058 | CABLE ASSEMBLY,POWER,ELECTRICAL                  | EA  | 1 |  |
| 2                                    | 23   | XDOOF    |                  | CX-7705/U         | 80058 | CABLE,POWER,ELECTRICAL                           | EA  | 1 |  |
| 2                                    | 24   | PAOZZ    | 5935-00-644-8597 | 9200              | 04009 | CONNECTOR,RECEPTACLE,ELECTRICAL 2QE,2W5          | EA  | 7 |  |
| 2                                    | 24   | XDOZZ    |                  | 5262              | 74545 | CONNECTOR,RECEPTACLE,ELECTRICAL 2Y7              | EA  | 7 |  |
| 2                                    | 25   | PAHZZ    | 5410-00-973-2936 | MK-679/G          | 24455 | MAINTENCE KIT,ELECTRONIC                         | EA  | 1 |  |
| 2                                    | 26   | PAFZZ    | 5410-00-771-3354 | MK-681/G          | 80058 | REPAIR KIT,ELECTRONIC EQUIPMENT SHELTER MK-681/G | EA  | 1 |  |
| 2                                    | 27   | PAOOF    | 5995-00-752-2566 | SCD383873GP3      | 80063 | CABLE ASSEMBLY,TELEPHONE                         | EA  | 2 |  |
| 2                                    | 28   | PAOZZ    | 6240-00-143-3070 | 50W/RS            | 24455 | LAMP,INCANDESCENT                                | EA  | 1 |  |
| 2                                    | 29   | PAOZZ    | 5935-00-359-6025 | 9210              | 74545 | CONNECTOR,RECEPTACLE,ELECTRICAL 2QE              | EA  | 4 |  |
| 2                                    | 29   | PAOZZ    | 5935-00-359-6025 | 9210              | 74545 | CONNECTOR,RECEPTACLE,ELECTRICAL 2W5              | EA  | 2 |  |
| 2                                    | 29   | XDOZZ    |                  | 7210B             | 74545 | CONNECTOR,RECEPTACLE,ELECTRICAL 2W5              | EA  | 2 |  |
| 2                                    | 29   | PAOZZ    | 5935-00-350-1834 | 5261              | 74545 | CONNECTOR,RECEPTACLE,ELECTRICAL 2Y7              | EA  | 2 |  |
| 2                                    | 29   | PAOZZ    | 5935-00-933-3454 | 5361              | 74545 | CONNECTOR,RECEPTACLE,ELECTRICAL 2Y7              | EA  | 2 |  |
| 2                                    | 30   | PAOZZ    | 6230-00-115-2687 | SCC539496         | 80063 | LIGHT,EXTENSION                                  | EA  | 1 |  |
| 2                                    | 31   | PAOZZ    | 6250-00-299-2884 | FS2               | 71183 | STARTER,FLUORESCENT 2QE                          | EA  | 8 |  |
| 2                                    | 31   | PAOZZ    | 6250-00-299-2884 | FS2               | 71183 | STARTER,FLUORESCENT 2W5,2Y7                      | EA  | 9 |  |

| SECTION II   |      | TML1-5895-365-24P      |              |       |                                 |         |     |      |  |
|--------------|------|------------------------|--------------|-------|---------------------------------|---------|-----|------|--|
| (1)          | (2)  | (3)                    | (4)          | (5)   | (6)                             |         | (7) | (8)  |  |
| ILLUSTRATION |      |                        |              |       | DESCRIPTION                     |         |     | QTY  |  |
| (a)          | (b)  | NATIONAL               | PART         | FSCN  | USABLE ON CODE                  |         | U/M | INC  |  |
| FIG          | ITEM | STOCK                  | NUMBER       |       |                                 |         |     | IN   |  |
| NO.          | NO.  | NUMBER                 |              |       |                                 |         |     | UNIT |  |
| 2            | 32   | PAOZZ 6250-00-175-2559 | 78X491       | 24455 | LAMPHOLDER                      | 2QE     | EA  | 8    |  |
| 2            | 32   | PAOZZ 6250-00-175-2559 | 78X491       | 24455 | LAMPHOLDER                      | 2W5,2Y7 | EA  | 9    |  |
| 2            | 33   | PAOZZ 6210-00-757-9694 | P40          | 19634 | RETAINER,LAMP                   | 2QE     | EA  | 16   |  |
| 2            | 34   | XDOZZ                  | 5051-1       | 24455 | SWITCH,TOGGLE                   | 2QE     | EA  | 2    |  |
| 2            | 35   | PAOZZ 5910-00-553-6096 | SCC33033-4   | 80063 | CAPACITOR,FIXED,PAPER           | 2QE     | EA  | 8    |  |
| 2            | 36   | PAOZZ 7230-00-729-6339 | SMC352521GR1 | 80063 | CURTAIN,BLACKOUT SELECT         | 2QE     | EA  | 1    |  |
| 2            | 36   | PAOZZ 5410-00-792-6341 | SMC352521GR2 | 80063 | CURTAIN,BLACKOUT                | 2QE     | EA  | 1    |  |
| 2            | 37   | PAOZZ 6210-00-921-6682 | SCC539466    | 80063 | SHIELD,LIGHT                    | 2QE     | EA  | 8    |  |
| 2            | 37   | PAOZZ 6210-00-921-6682 | SCC539466    | 80063 | SHIELD,LIGHT                    | 2W5,2Y7 | EA  | 9    |  |
| 2            | 38   | PAOZZ 6250-00-804-3449 | 89457D       | 24455 | BALLAST,LAMP                    | 2QE     | EA  | 8    |  |
| 2            | 39   | PAOZZ 6250-00-299-6093 | 78X736       | 24455 | LAMPHOLDER                      | 2QE     | EA  | 8    |  |
| 2            | 39   | PAOZZ 6250-00-299-6093 | 78X736       | 24455 | LAMPHOLDER                      | 2W5,2Y7 | EA  | 9    |  |
| 2            | 40   | PAOZZ 6240-00-152-2996 | F20T12CW     | 24455 | LAMP,FLUORESCENT                | 2QE     | EA  | 8    |  |
| 2            | 40   | PAOZZ 6240-00-152-2996 | F20T1CW      | 24455 | LAMP,FLUORESCENT                | 2W5,2Y7 | EA  | 9    |  |
| 2            | 41   | PAOZZ 6645-00-410-2395 | SCC539475    | 80063 | CLOCK,WALL                      | 2W5,2Y7 | EA  | 1    |  |
| 2            | 42   | PAOZZ 6105-00-111-2546 | SCD539615-2  | 80063 | MOTOR,ELECTRICAL                | 2W5,2Y7 | EA  | 2    |  |
| 2            | 43   | XDOZZ                  | F3036        | 24446 | SWITCH,TOGGLE                   | 2W5,2Y7 | EA  | 3    |  |
| 2            | 44   | PAOZZ 5940-00-283-5386 | U-106/U      | 80058 | POST BINDING                    |         | EA  | 8    |  |
| 2            | 45   | PAOZZ 5975-00-879-7234 | 5211         | 74545 | COVER,ELECTRICAL OUTLET         |         | EA  | 1    |  |
| 2            | 46   | PAOZZ 5935-00-064-5732 | U-238B/G     | 81349 | CONNECTOR,RECEPTACLE,ELECTRICAL |         | EA  | 2    |  |
| 2            | 47   | PAOZZ 5970-00-869-6263 | SCC76202-1   | 80063 | CAP,ELECTRICAL                  |         | EA  | 8    |  |



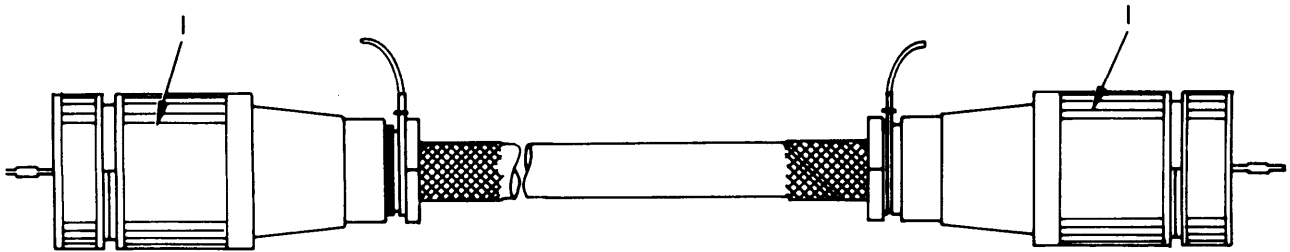




ELONG007

Figure 3. Power Distribution Panel.

| SECTION II                          |      | TML1-5895-365-24P |                  |               |             |                |      |  |
|-------------------------------------|------|-------------------|------------------|---------------|-------------|----------------|------|--|
| (1)                                 | (2)  | (3)               | (4)              | (5)           | (6)         | (7)            | (8)  |  |
| ILLUSTRATION                        |      |                   |                  |               |             |                |      |  |
| (a)                                 | (b)  | NATIONAL          |                  |               | DESCRIPTION |                | QTY  |  |
| FIG                                 | ITEM | STOCK             | PART             |               |             |                | INC  |  |
| NO.                                 | NO.  | NUMBER            | NUMBER           | FSCN          |             | USABLE ON CODE | IN   |  |
|                                     |      |                   |                  |               |             |                | UNIT |  |
| GROUP 0301 POWER DISTRIBUTION PANEL |      |                   |                  |               |             |                |      |  |
| 3                                   | 1    | PAOZZ             | 6625-00-892-5315 | MR36W50SPECR  | 81349       |                | EA 1 |  |
| 3                                   | 2    | PAOZZ             | 6240-00-179-1814 | NE-45         | 08108       |                | EA 6 |  |
| 3                                   | 3    | PAOZZ             | 6250-00-079-9888 | 4-12-18       | 95263       | 2QE            | EA 6 |  |
| 3                                   | 3    | PAOZZ             | 6250-00-761-6330 | 4-06          | 72619       | 2W5,2Y7        | EA 6 |  |
| 3                                   | 4    | PAOZZ             | 5925-00-818-4811 | Q0-115        | 81487       |                | EA 4 |  |
| 3                                   | 5    | PAOZZ             | 5925-00-583-7941 | Q0-120        | 88753       |                | EA 2 |  |
| 3                                   | 6    | PAOZZ             | 5925-00-703-6084 | Q0-250        | 04809       |                | EA 1 |  |
| 3                                   | 7    | PAOZZ             | 6625-00-341-4071 | MR36W150ACVVR | 81349       |                | EA 1 |  |
| 3                                   | 8    | PAOZZ             | 5950-00-705-9105 | 3CT35B        | 93993       |                | EA 1 |  |



ELONG009

Figure 4. Cable, Power, Electrical CX-7705/U.

| SECTION II                                    |      |          |                  | TM11-5895-365-24P |                |     |      |
|---|------|----------|------------------|-------------------|----------------|-----|------|
| (1)   | (2)  | (3)      | (4)              | (5)               | (6)            | (7) | (8)  |
| ILLUSTRATION                                  |      |          |                  | DESCRIPTION       |                |     |      |
| (a)   | (b)  | NATIONAL |                  | PART              |                | QTY |      |
| FIG   | ITEM | SMR      | STOCK            | NUMBER            |                | INC |      |
| NO.   | NO.  | CODE     | NUMBER           | FSCM              | USABLE ON CODE | U\M | UNIT |
| GROUP 0302 CABLE, POWER, ELECTRICAL CX-7705/U |      |          |                  |                   |                |     |      |
| 4   | 1    | PAOZZ    | 5935-00-064-5731 | U-237B/G          | 81349          | EA  | 2    |
| CONNECTOR, PLUG, ELECTRICAL                   |      |          |                  |                   |                |     |      |

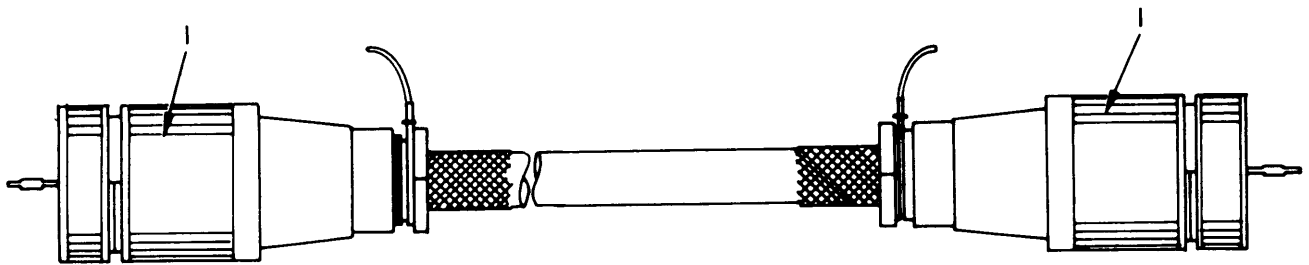
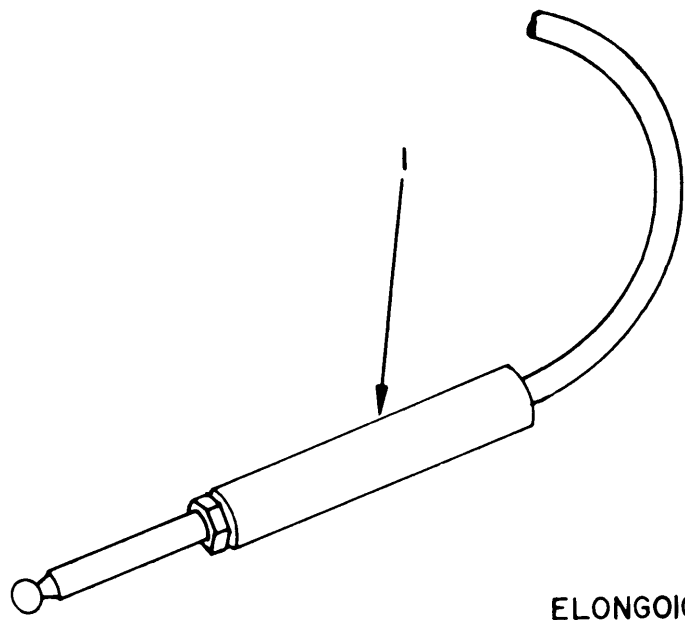


Figure 5. Cable, Power, Electrical CX-7453/U.

| SECTION II                                    |      |          |                  | TM11-5895-365-24P |                |     |      |
|---|------|----------|------------------|-------------------|----------------|-----|------|
| (1)   | (2)  | (3)      | (4)              | (5)               | (6)            | (7) | (8)  |
| ILLUSTRATION                                  |      |          |                  | DESCRIPTION       |                |     |      |
| (a)   | (b)  | NATIONAL |                  | PART              |                | QTY |      |
| FIG   | ITEM | SMR      | STOCK            | NUMBER            |                | INC |      |
| NO.   | NO.  | CODE     | NUMBER           | FSCM              | USABLE ON CODE | U\M | UNIT |
| GROUP 0303 CABLE, POWER, ELECTRICAL CX-7453/U |      |          |                  |                   |                |     |      |
| 5   | 1    | PAOZZ    | 5935-00-064-5731 | U-237B/G          | 81349          | EA  | 2    |
| CONNECTOR, PLUG, ELECTRICAL                   |      |          |                  |                   |                |     |      |



ELONGOIO

Figure 6. Cable Assembly, Telephone 4 Foot Long O/A



| SECTION II                           |      |          |        | TM11-5895-365-24P |                 |     |     |
|--------------------------------------|------|----------|--------|-------------------|-----------------|-----|-----|
| (1)                                  | (2)  | (3)      | (4)    | (5)               | (6)             | (7) | (8) |
| ILLUSTRATION                         |      |          |        | DESCRIPTION       |                 |     |     |
| (a)                                  | (b)  | NATIONAL |        | FSCM              |                 | QTY |     |
| FIG                                  | ITEM | SMR      | STOCK  | PART              | USABLE ON CODE  | U\M | INC |
| NO.                                  | NO.  | CODE     | NUMBER | NUMBER            |                 |     | IN  |
|                                      |      |          |        | UNIT              |                 |     |     |
| GROUP 0304 CABLE ASSEMBLY, TELEPHONE |      |          |        |                   |                 |     |     |
| 4 FT LONG O/A                        |      |          |        |                   |                 |     |     |
| 6                                    | 1    | XDOZZ    | J310   | 80058             | JACK, TELEPHONE | EA  | 1   |

## NATIONAL STOCK NUMBER AND PART NUMBER INDEX

NOTE: LATEST NATIONAL STOCK NUMBER ASSIGNMENTS ARE INCLUDED AT END OF INDEX

| STOCK NUMBER     | FIGURE NO. | ITEM NO. | STOCK NUMBER     | FIGURE NO. | ITEM NO. |
|------------------|------------|----------|------------------|------------|----------|
| 5935-00-064-5731 | 5          | 1        | 8130-00-656-1090 | 2          | 19       |
| 5935-00-064-5731 | 4          | 1        | 5930-00-683-2703 | 2          | 11       |
| 5935-00-064-5732 | 2          | 46       | 5925-00-703-6084 | 3          | 6        |
| 9999-00-066-4524 | 1          | 1        | 5950-00-705-9105 | 3          | 8        |
| 6250-00-079-9888 | 3          | 3        | 6230-00-729-9614 | 2          | 8        |
| 6105-00-111-2546 | 2          | 42       |                  |            |          |
| 6230-00-115-2687 | 2          | 30       | 4940-00-752-2525 | 2          | 5        |
| 5410-00-117-2868 | 1          | 1        | 5995-00-752-2566 | 2          | 27       |
| 6240-00-143-3070 | 2          | 28       | 6210-00-757-9694 | 2          | 33       |
| 5935-00-149-3985 | 2          | 13       | 6250-00-761-6330 | 3          | 3        |
| 6240-00-152-2996 | 2          | 40       | 5410-00-771-3354 | 2          | 26       |
| 6240-00-155-7786 | 2          | 9        | 5410-00-792-6335 | 2          | 21       |
| 6240-00-179-1814 | 3          | 2        | 5410-00-792-6336 | 2          | 20       |
| 5975-00-224-5260 | 2          | 16       | 7230-00-792-6339 | 2          | 36       |
| 5940-00-283-5386 | 2          | 44       | 5410-00-792-6341 | 2          | 36       |
| 5110-00-293-2339 | 2          | 6        | 6250-00-804-3449 | 2          | 38       |
| 6250-00-299-2884 | 2          | 31       | 5925-00-818-4811 | 3          | 4        |
| 6250-00-299-6093 | 2          | 39       | 5970-00-869-6263 | 2          | 47       |
| 6250-00-299-6562 | 2          | 1        | 5975-00-879-7234 | 2          | 45       |
| 6625-00-341-4071 | 3          | 7        | 6625-00-892-5315 | 3          | 1        |
| 7920-00-342-4521 | 2          | 10       | 6210-00-921-6682 | 2          | 37       |
| 5935-00-350-1834 | 2          | 29       | 4140-00-926-4189 | 2          | 17       |
| 5935-00-359-6025 | 2          | 29       | 4140-00-926-4190 | 2          | 14       |
| 4210-00-383-7127 | 2          | 15       | 5935-00-933-3454 | 2          | 29       |
| 6645-00-410-2395 | 2          | 41       | 6645-00-950-8599 | 2          | 12       |
| 5910-00-553-6096 | 2          | 35       | 5930-00-959-3441 | 2          | 11       |
| 5925-00-583-7941 | 3          | 5        | 5410-00-973-2936 | 2          | 25       |
| 4210-00-595-4085 | 2          | 7        | 6105-00-999-4814 | 2          | 18       |
| 6240-00-635-9753 | 2          | 2        | 5410-00-999-6022 | 1          | 1        |

| PART NUMBER   | FSCM  | FIG. NO. | ITEM NO. | PART NUMBER  | FSCM  | FIG. NO. | ITEM NO. |
|---------------|-------|----------|----------|--------------|-------|----------|----------|
| AT-11         | 81349 | 2        | 12       | SCC76202-1   | 80063 | 2        | 47       |
| BZ2RQ18A2     | 91929 | 2        | 11       | SCD383873GP3 | 80063 | 2        | 27       |
| BZ2RQ181P4    | 91929 | 2        | 11       | SCD539491    | 80063 | 2        | 8        |
| CX-7453/U     | 80058 | 2        | 22       | SCD539615-2  | 80063 | 2        | 42       |
| CX-7705/U     | 80058 | 2        | 23       | SCD628052    | 80063 | 2        | 3        |
| FS2           | 71183 | 2        | 31       | SMB352166    | 80063 | 2        | 5        |
| F20T12CW      | 24455 | 2        | 40       | SMB542412    | 80063 | 2        | 21       |
| F3036         | 24446 | 2        | 43       | SMC352521GP1 | 80063 | 2        | 36       |
| J310          | 80058 | 6        | 1        | SMC542696GP1 | 80063 | 2        | 14       |
| KH37KG712X    | 24455 | 2        | 18       | SMC542696GP2 | 80063 | 2        | 17       |
| MK-679/G      | 24455 | 2        | 25       | U-106/U      | 80058 | 2        | 44       |
| MK-681/G      | 80058 | 2        | 26       | U-237B/G     | 81349 | 5        | 1        |
| MR36W150ACVVR | 81349 | 3        | 7        | U-237B/G     | 81349 | 4        | 1        |
| MR36W50SPECR  | 81349 | 3        | 1        | U-238B/G     | 81349 | 2        | 46       |
| MX-148/G      | 80058 | 2        | 16       |              |       |          |          |
| M15098-3-002  | 81349 | 2        | 2        | 3CT35B       | 93993 | 3        | 8        |
| NE45          | 8108  | 3        | 2        | 6-Apr        | 72619 | 3        | 3        |
| PRB-2-1/2     | 33525 | 2        | 15       | 4/12/18      | 95263 | 3        | 3        |
| PR2           | 24455 | 2        | 9        | 4109         | 74545 | 2        | 1        |
| P40           | 19634 | 2        | 33       | 50W/RS       | 24455 | 2        | 28       |
| Q0-115        | 81487 | 3        | 4        | 5051-1       | 24455 | 2        | 34       |
| Q0-120        | 88753 | 3        | 5        | 5211         | 74545 | 2        | 45       |
| Q0-250        | 4809  | 3        | 6        | 5261         | 74545 | 2        | 29       |
| RC-435/U      | 80058 | 2        | 19       | 5262         | 74545 | 2        | 24       |
| S-141/G       | 80058 | 1        | 1        | 5361         | 74545 | 2        | 29       |
| S-280A/G      | 80058 | 1        | 1        | 5521-1       | 24455 | 2        | 4        |
| S-280B/G      | 80058 | 1        | 1        | 705          | 81902 | 2        | 20       |
| SCC33033-4    | 80063 | 2        | 35       | 7210B        | 74545 | 2        | 29       |
| SCC352521GP2  | 80063 | 2        | 36       | 78X491       | 24455 | 2        | 32       |
| SCC539466     | 80063 | 2        | 37       | 78X736       | 24455 | 2        | 39       |
| SCC539468     | 80063 | 2        | 7        | 89457D       | 24455 | 2        | 38       |
| SCC539469     | 80063 | 2        | 10       | 9200         | 4009  | 2        | 24       |
| SCC539475     | 80063 | 2        | 41       | 9210         | 74545 | 2        | 29       |
| SCC539496     | 80063 | 2        | 30       | 9754         | 74545 | 2        | 13       |
| SCC539541     | 80063 | 2        | 6        |              |       |          |          |

## LATEST NATIONAL STOCK NUMBER ASSIGNMENTS

| STOCK NUMBER     | FIGURE NO. | ITEM NO. |
|------------------|------------|----------|
| 6250-00-175-2559 | 2          | 39       |
| 5930-00-865-6101 | 2          | 4        |



# SOMETHING WRONG WITH THIS MANUAL?

THEN... JOT DOWN THE DOPE ABOUT IT ON THIS FORM, TEAR IT OUT, FOLD IT AND DROP IT IN THE MAIL!

FROM: (YOUR UNIT'S COMPLETE ADDRESS)

Commander  
Stateside Army Depot  
ATTN: AMSTA-US  
Stateside, N.J. 07703

DATE 10 July 1975

|   |                   |                              |
|---|-------------------|------------------------------|
| PUBLICATION NUMBER<br>TM 11-5840-340-12 | DATE<br>23 Jan 74 | TITLE<br>Radar Set AN/PSC-76 |
|---|-------------------|------------------------------|

BE EXACT... PIN-POINT WHERE IT IS IN THIS SPACE TELL WHAT IS WRONG AND WHAT SHOULD BE DONE ABOUT IT:

| PAGE NO. | PARA-GRAPH | FIGURE NO. | TABLE NO. |   |
|----------|------------|------------|-----------|---|
| 2-25     | 2-28       |            |           | <p>Recommend that the installation antenna alignment procedure be changed through to specify a 2° IFF antenna lag rather than 1°.</p> <p>REASON: Experience has shown that with only a 1° lag, the antenna servo system is too sensitive to wind gusting in excess of 25 knots, and has a tendency to rapidly accelerate and decelerate as it hunts, causing strain to the drive train. Hunting is minimized by adjusting the lag to 2° without degradation of operation.</p> |
| 3-10     | 3-3        |            | 3-1       | <p>Item 5, Function column. Change "2 db" to "3db."</p> <p>REASON: The adjustment procedure for the TRANS POWER FAULT indicator calls for a 3 db (500 watts) adjustment to light the TRANS POWER FAULT indicator.</p>   |
| 5-6      | 5-8        |            |           | <p>Add new step f.1 to read, "Replace cover plate removed in step e.1, above."</p> <p>REASON: To replace the cover plate.</p>   |
|          |            | FO3        |           | <p>Zone C 3. On J1-2, change "+24 VDC to "+5 VDC."</p> <p>REASON: This is the output line of the 5 VDC power supply. + 24 VDC is the input voltage.</p>   |

TEAR ALONG DOTTED LINE

|   |   |
|---|---|
| TYPED NAME, GRADE OR TITLE, AND TELEPHONE NUMBER<br>SSG I. M. DeSpiritof 999-1776 | SIGN HERE:<br><i>SSG I. M. DeSpiritof</i> |
|---|---|

DA FORM 1 AUG 74 2028-2 (TEST) P.S.--IF YOUR OUTFIT WANTS TO KNOW ABOUT YOUR MANUAL "FIND," MAKE A CARBON COPY OF THIS AND GIVE IT TO YOUR HEADQUARTERS.

HISA 1686-75





FILL IN YOUR  
UNIT'S ADDRESS

FOLD BACK

DEPARTMENT OF THE ARMY

OFFICIAL BUSINESS  
PENALTY FOR PRIVATE USE, \$300

POSTAGE AND FEES PAID  
DEPARTMENT OF THE ARMY  
DOD-314



Commander  
US Army Electronics Command  
ATTN: DRSEL-MA-Q  
Fort Monmouth, New Jersey 07703

FOLD BACK

TEAR ALONG DOTTED LINE



THEN... JOT DOWN THE DOPE ABOUT IT ON THIS FORM, TEAR IT OUT, FOLD IT AND DROP IT IN THE MAIL!

# SOMETHING WRONG WITH THIS MANUAL?

FROM: (YOUR UNIT'S COMPLETE ADDRESS)

DATE

PUBLICATION NUMBER

DATE

TITLE

BE EXACT... PIN-POINT WHERE IT IS

IN THIS SPACE TELL WHAT IS WRONG AND WHAT SHOULD BE DONE ABOUT IT:

| PAGE NO. | PARA-GRAPH | FIGURE NO. | TABLE NO. |
|----------|------------|------------|-----------|
|----------|------------|------------|-----------|

TEAR ALONG DOTTED LINE

TYPED NAME, GRADE OR TITLE, AND TELEPHONE NUMBER

SIGN HERE:

FILL IN YOUR  
UNIT'S ADDRESS

FOLD BACK

DEPARTMENT OF THE ARMY

OFFICIAL BUSINESS  
PENALTY FOR PRIVATE USE, \$300

POSTAGE AND FEES PAID  
DEPARTMENT OF THE ARMY  
DOD-314



Commander  
US Army Electronics Command  
ATTN: DRSEL-MA-Q  
Fort Monmouth, New Jersey 07703

TEAR ALONG DOTTED LINE

FOLD BACK





# SOMETHING WRONG WITH THIS MANUAL?

THEN... JOT DOWN THE DOPE ABOUT IT ON THIS FORM, TEAR IT OUT, FOLD IT AND DROP IT IN THE MAIL!

FROM: (YOUR UNIT'S COMPLETE ADDRESS)

DATE

PUBLICATION NUMBER

DATE

TITLE

BE EXACT. . . PIN-POINT WHERE IT IS

IN THIS SPACE TELL WHAT IS WRONG AND WHAT SHOULD BE DONE ABOUT IT:

| PAGE NO. | PARA-GRAPH | FIGURE NO. | TABLE NO. |
|----------|------------|------------|-----------|
|----------|------------|------------|-----------|

TEAR ALONG DOTTED LINE

TYPED NAME, GRADE OR TITLE, AND TELEPHONE NUMBER

SIGN HERE:

DA FORM 1 AUG 74 2028-2 (TEST)

P.S.--IF YOUR OUTFIT WANTS TO KNOW ABOUT YOUR MANUAL "FIND," MAKE A CARBON COPY OF THIS AND GIVE IT TO YOUR HEADQUARTERS.

FILL IN YOUR  
UNIT'S ADDRESS

FOLD BACK

DEPARTMENT OF THE ARMY

OFFICIAL BUSINESS

PENALTY FOR PRIVATE USE, \$300

POSTAGE AND FEES PAID  
DEPARTMENT OF THE ARMY  
DOD-314



Commander  
US Army Electronics Command  
ATTN: DRSEL-MA-Q  
Fort Monmouth, New Jersey 07703

TEAR ALONG DOTTED LINE

FOLD BACK

By Order of the Secretary of the Army:

**BERNARD W. ROGERS**  
*General, United States Army*  
*Chief of Staff*

DISTRIBUTION:

*Active Army:*

USASA (2)  
COE (1)  
TSG (1)  
USAARENBD (1)  
DARCOM (1)  
TRADOC (2)  
OS Maj Comd (4)  
LOGCOMDS (3)  
MICOM (2)  
TECOM (2)  
USACC (4)  
MDW (1)  
Armies (2)  
Corps (2)  
HISA (Ft Monmouth) (33)  
Svc Colleges (1)  
USASIGS (5)  
USAADS (2)  
USAFAS (2)  
USAARMS (2)  
USAIS (2)  
USAES (2)  
USAICS (3)  
MAAG (1)  
USARMIS (1)  
SigFLDMS (1)  
USAERDAA (1)  
USAERDAW (1)

Installations (2) except  
Fort Carson (5)  
Fort Gillem (10)  
Fort Huachuca (10)  
Ft Richardson (ECOM Ofc) (2)  
LBAD (14)  
SAAD (30)  
TOAD (14)  
SHAD (3)  
Units org under fol TOE: (1)  
5-52  
5-112  
7  
11-85  
11-95  
11-97  
11-98  
11-117  
11-127  
11-137  
11-147  
11-225  
11-358  
11-500 (AA-AC)  
17  
37  
44-535  
44-537  
57-102

NG: None

USAR: None

For explanation of abbreviations used see, AR 310-50









